

## \$469,900 - 10850 11 Avenue, Edmonton

MLS® #E4422329

**\$469,900**

3 Bedroom, 3.00 Bathroom, 1,289 sqft  
Condo / Townhouse on 0.00 Acres

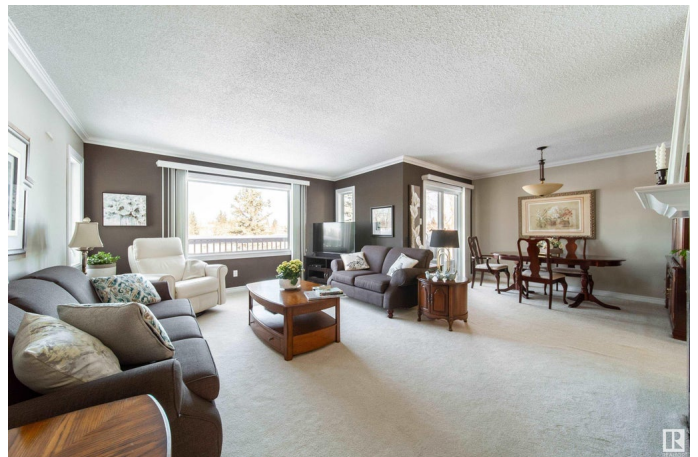
Bearspaw (Edmonton), Edmonton, AB

This is the one you have been waiting for! The premier unit in the complex; almost 1300 sq ft, double attached garage, walk out basement and a perfect view of the lake from every window in the house. Home shows fantastic and has been very well taken care of over the years. Large open floor layout with updates throughout. Laundry has been moved upstairs. Sit in front of the cozy fireplace in the living room and be mesmerized by the beauty of the lake behind. Private and serene. Updated kitchen with granite counters. 2 large bedrooms including a primary bedroom with 4 piece ensuite and walkin closet. Shower was added to the half bath on the main floor making it a 3 piece. Fully finished WALKOUT basement with additional bedroom, den, living area, 4 piece bathroom and large storage room. This home is truly one of a kind!

Built in 1985

### Essential Information

MLS® #	E4422329
Price	\$469,900
Bedrooms	3
Bathrooms	3.00
Full Baths	3
Square Footage	1,289



Acres	0.00
Year Built	1985
Type	Condo / Townhouse
Sub-Type	Half Duplex
Style	Bungalow
Status	Active

### Community Information

Address	10850 11 Avenue
Area	Edmonton
Subdivision	Bearspaw (Edmonton)
City	Edmonton
County	ALBERTA
Province	AB
Postal Code	T6J 6H9

### Amenities

Amenities	Club House, Walkout Basement
Parking	Double Garage Attached
Is Waterfront	Yes

### Interior

Interior Features	ensuite bathroom
Appliances	Dishwasher-Built-In, Dryer, Microwave Hood Fan, Refrigerator, Stove-Electric, Washer, Window Coverings
Heating	Forced Air-1, Natural Gas
Fireplace	Yes
Fireplaces	Direct Vent
Stories	2
Has Basement	Yes
Basement	Full, Finished

### Exterior

Exterior	Wood, Brick, Stucco
Exterior Features	Backs Onto Lake, Flat Site, Golf Nearby, Landscaped, Picnic Area
Roof	Asphalt Shingles
Construction	Wood, Brick, Stucco
Foundation	Concrete Perimeter

### Additional Information

Date Listed	February 19th, 2025
Days on Market	22
Zoning	Zone 16
Condo Fee	\$608

DATA IS DEEMED RELIABLE BUT IS NOT GUARANTEED ACCURATE BY THE REALTORS® ASSOCIATION OF EDMONTON. COPYRIGHT 2025 BY THE REALTORS® ASSOCIATION OF EDMONTON. ALL RIGHTS RESERVED. Trademarks are owned or controlled by the Canadian Real Estate Association (CREA) and identify real estate professionals who are members of CREA (REALTOR®, REALTORS®) and/or the quality of services they provide (MLS®, Multiple Listing Service®)

Listing information last updated on March 13th, 2025 at 9:17am MDT