

## \$569,900 - 90 Everitt Drive, St. Albert

MLS® #E4424947

**\$569,900**

3 Bedroom, 2.50 Bathroom, 2,257 sqft

Single Family on 0.00 Acres

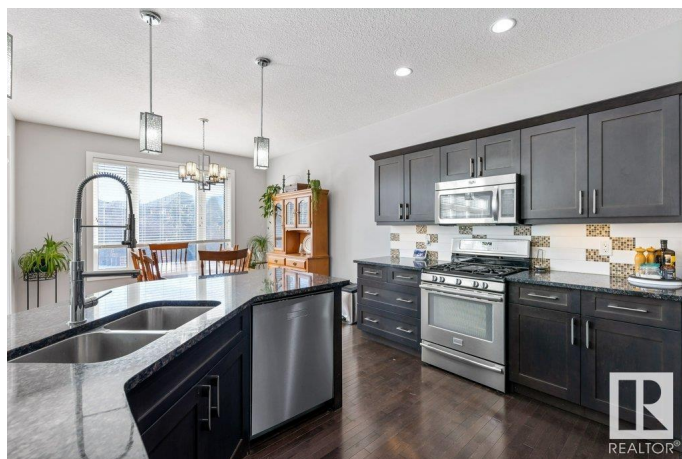
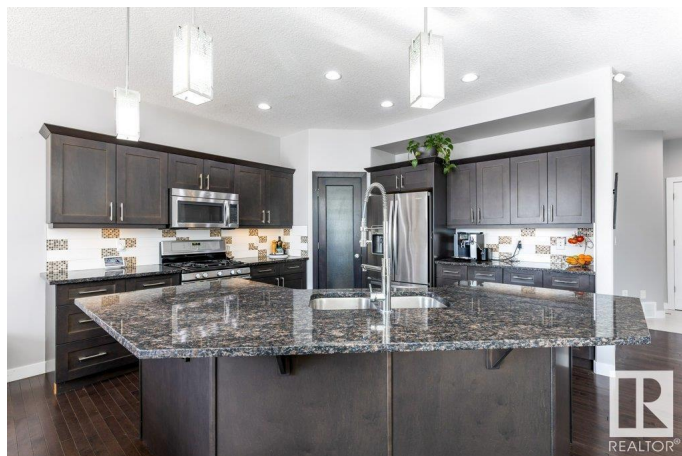
Erin Ridge North, St. Albert, AB

This beautiful 2-storey home offers 2,257 sqft of luxurious living space, thoughtfully designed for comfort and style. The gourmet kitchen boasts professionally crafted maple cabinets, gleaming granite countertops, and a spacious center island, perfect for entertaining. A cozy breakfast nook adds to the charm of the space. The inviting living room is centered around a beautiful gas fireplace, creating a warm and welcoming atmosphere. Upstairs, you'll find three generously sized bedrooms, including a master suite that features a spa-like ensuite and a walk-in closet for ultimate convenience. The expansive bonus room provides ample space for family fun or relaxation. The unfinished basement offers a blank canvas, ready for your personal touch and future development. Step outside to enjoy the large composite deck, complete with privacy glass, and a convenient BBQ gas line, making it the perfect space for summer entertaining or simply relaxing.

Built in 2013

### Essential Information

MLS® #	E4424947
Price	\$569,900
Bedrooms	3
Bathrooms	2.50



Full Baths	2
Half Baths	1
Square Footage	2,257
Acres	0.00
Year Built	2013
Type	Single Family
Sub-Type	Detached Single Family
Style	2 Storey
Status	Active

### Community Information

Address	90 Everitt Drive
Area	St. Albert
Subdivision	Erin Ridge North
City	St. Albert
County	ALBERTA
Province	AB
Postal Code	T8N 4L2

### Amenities

Amenities	Deck, Natural Gas BBQ Hookup
Parking	Double Garage Attached

### Interior

Interior Features	ensuite bathroom
Appliances	Dishwasher-Built-In, Dryer, Garage Control, Garage Opener, Microwave Hood Fan, Refrigerator, Stove-Gas, Washer, Window Coverings
Heating	Forced Air-1, Natural Gas
Stories	2
Has Basement	Yes
Basement	Full, Unfinished

### Exterior

Exterior	Wood, Stone, Vinyl
Exterior Features	Fenced, Flat Site, Landscaped, Playground Nearby, Public Transportation, Schools, Shopping Nearby, See Remarks
Roof	Asphalt Shingles
Construction	Wood, Stone, Vinyl
Foundation	Concrete Perimeter

**Additional Information**

Date Listed            March 10th, 2025  
Days on Market       3  
Zoning                 Zone 24

DATA IS DEEMED RELIABLE BUT IS NOT GUARANTEED ACCURATE BY THE REALTORS® ASSOCIATION OF EDMONTON. COPYRIGHT 2025 BY THE REALTORS® ASSOCIATION OF EDMONTON. ALL RIGHTS RESERVED.Trademarks are owned or controlled by the Canadian Real Estate Association (CREA) and identify real estate professionals who are members of CREA (REALTOR®, REALTORS®) and/or the quality of services they provide (MLS®, Multiple Listing Service®)  
Listing information last updated on March 13th, 2025 at 9:32am MDT